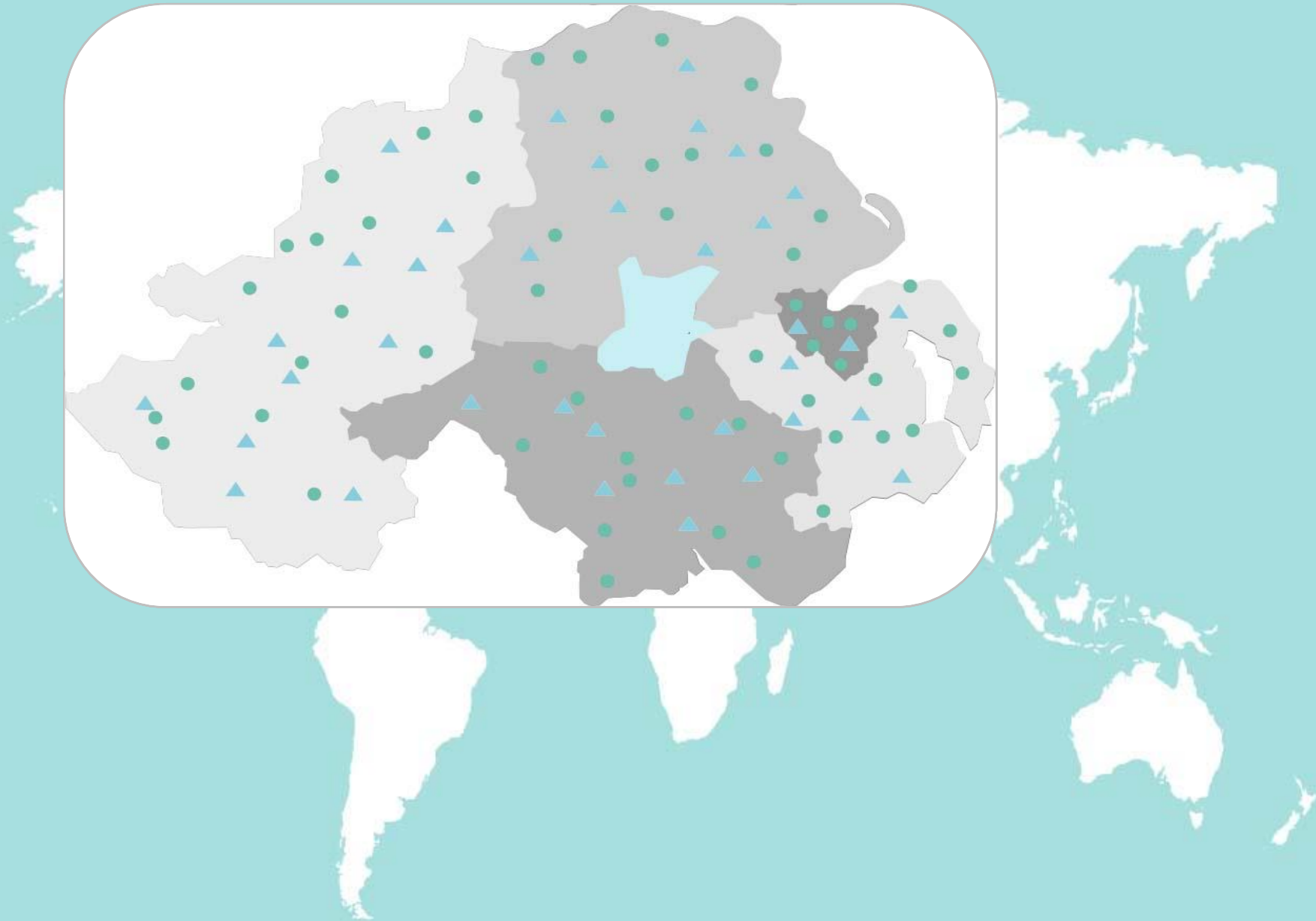


Four new scenarios of future health care

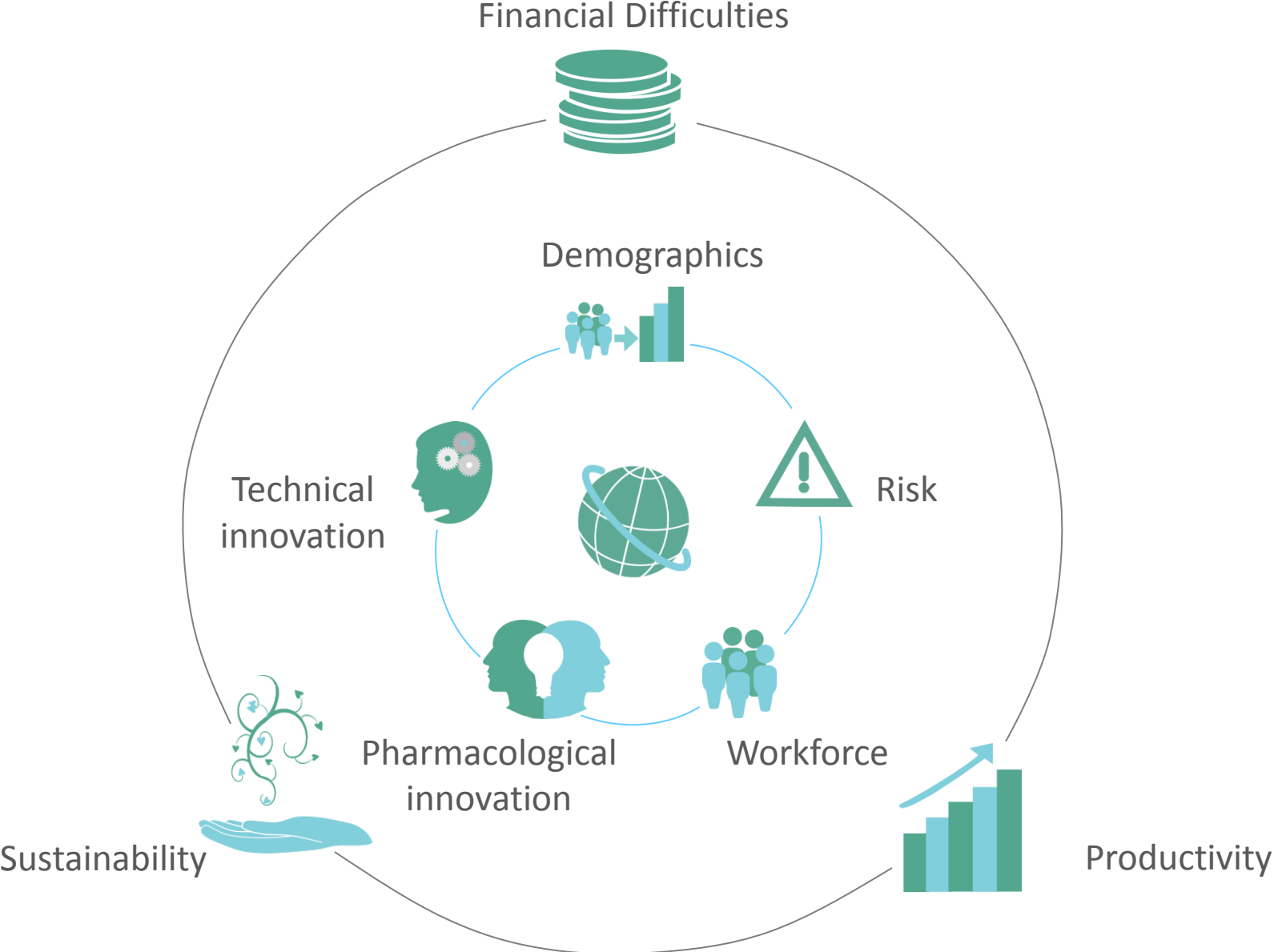
The future of community and hospital pharmacy as an integrated actor within the health care system.



Mark Timoney
Chief Pharmaceutical Officer
Department of Health, Social Services and Public Health
Northern Ireland

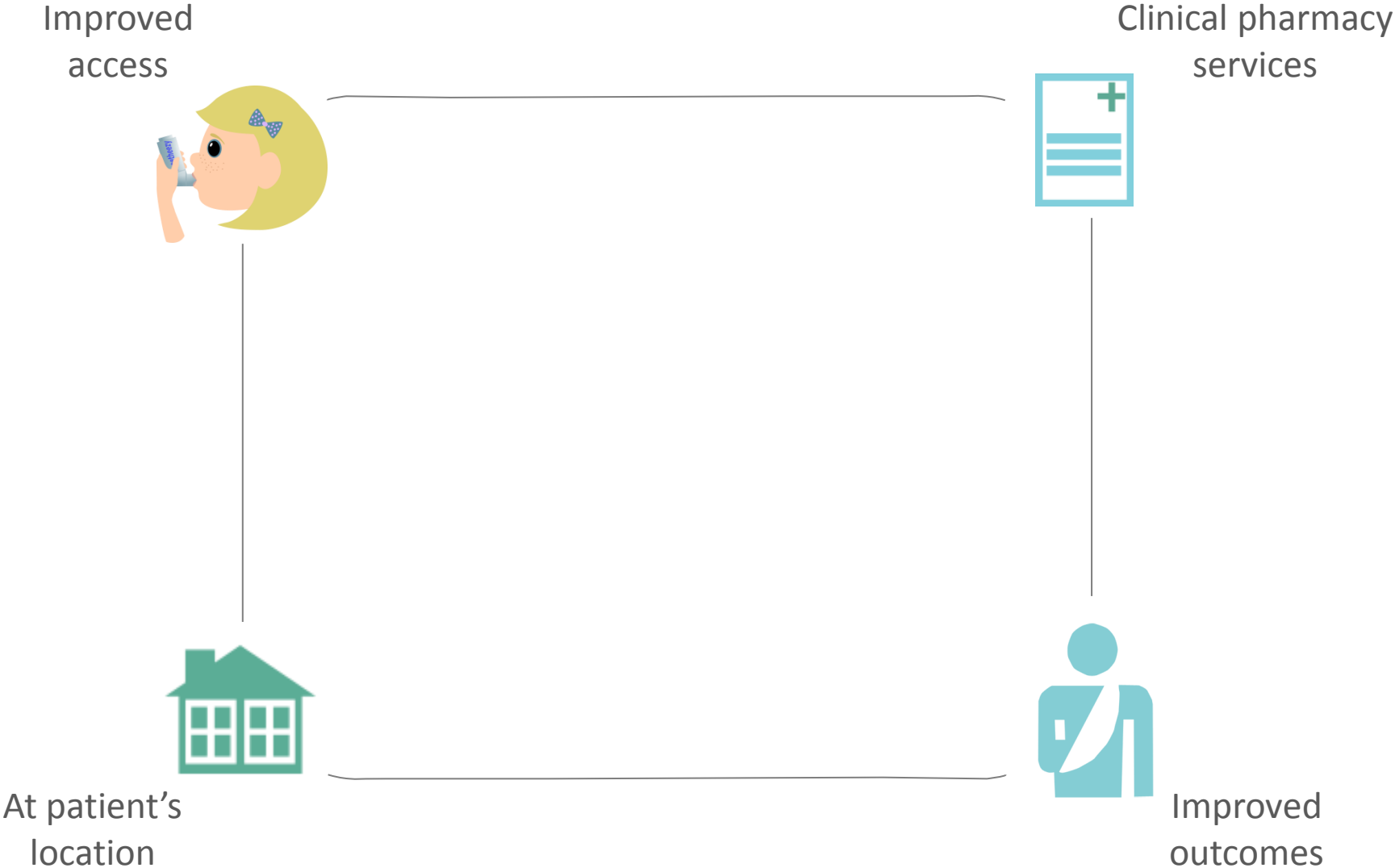


Global challenges



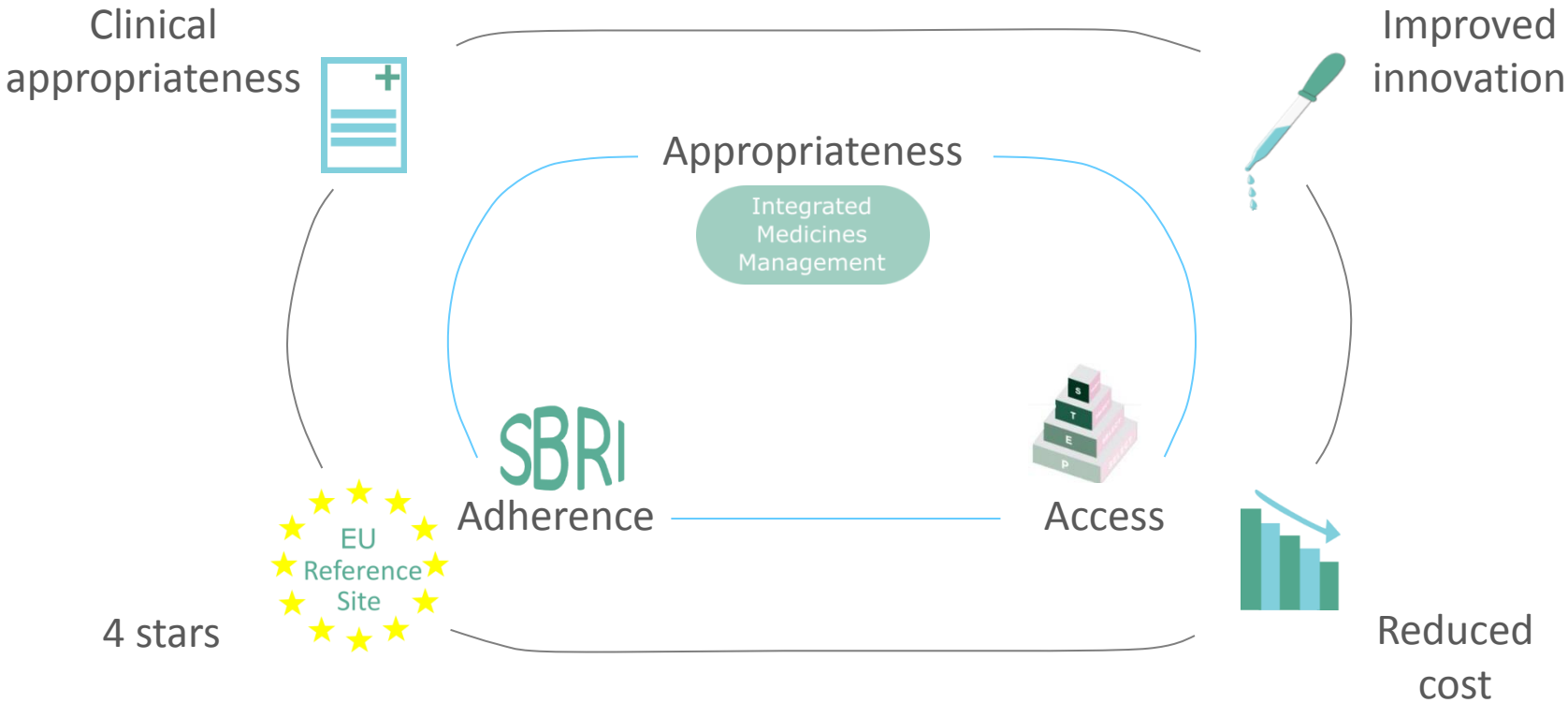
Integration?

Rationale for integration



Innovation ROI Quality improvements **Inaccurate** **Habitual**
Policies **Change** Patient outcomes **Health**
Safety **Barriers** **gain**
Practice Complexity **Cost** **Procedural**
Efficiencies **Unavailable** **Commissioning**

Pharmaceutical clinical effectiveness



Predictive analysis

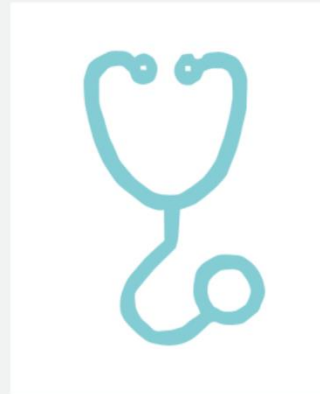
Response to medication



Hospital Readmission



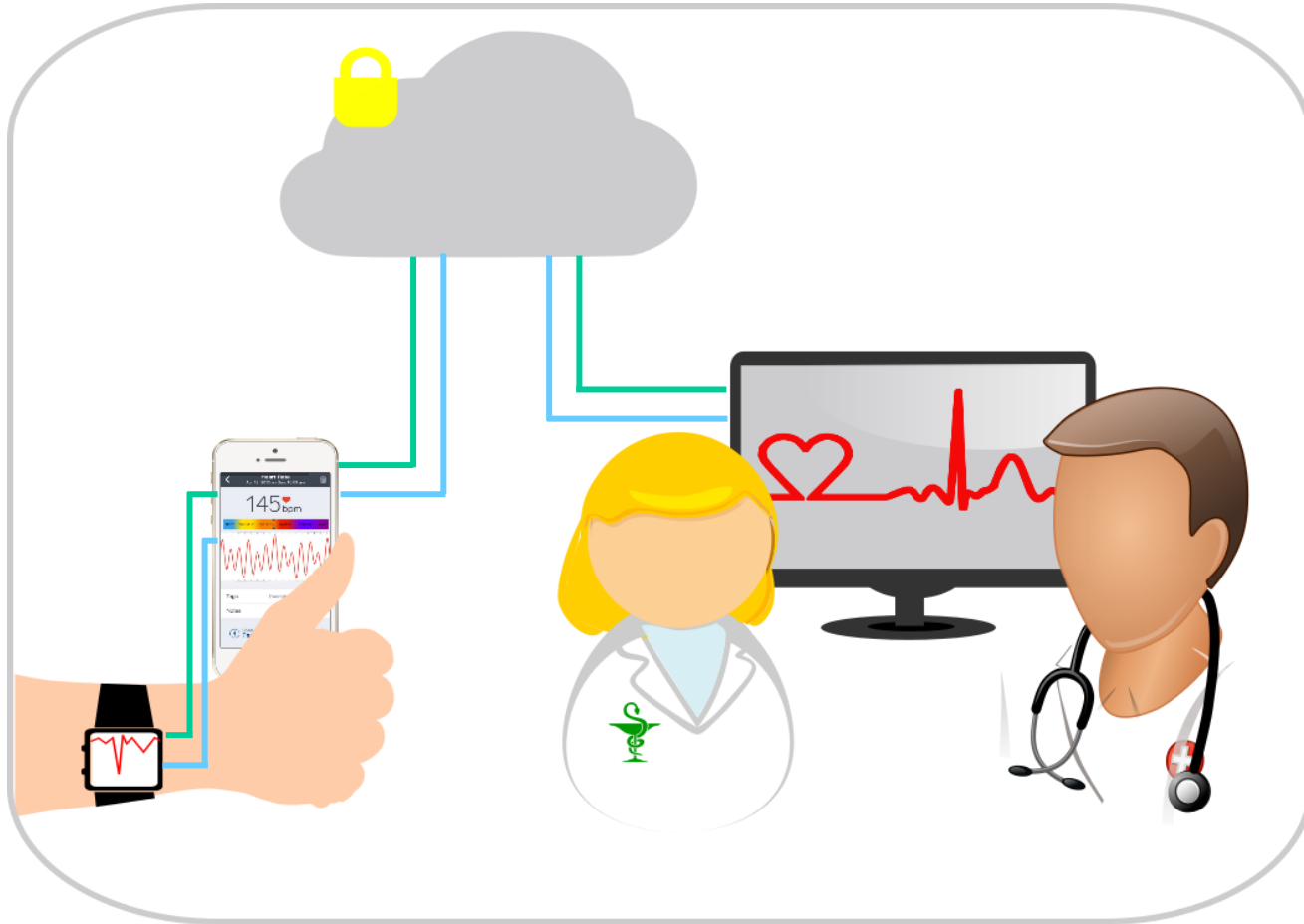
Accuracy of Diagnosis



Personalised Treatment

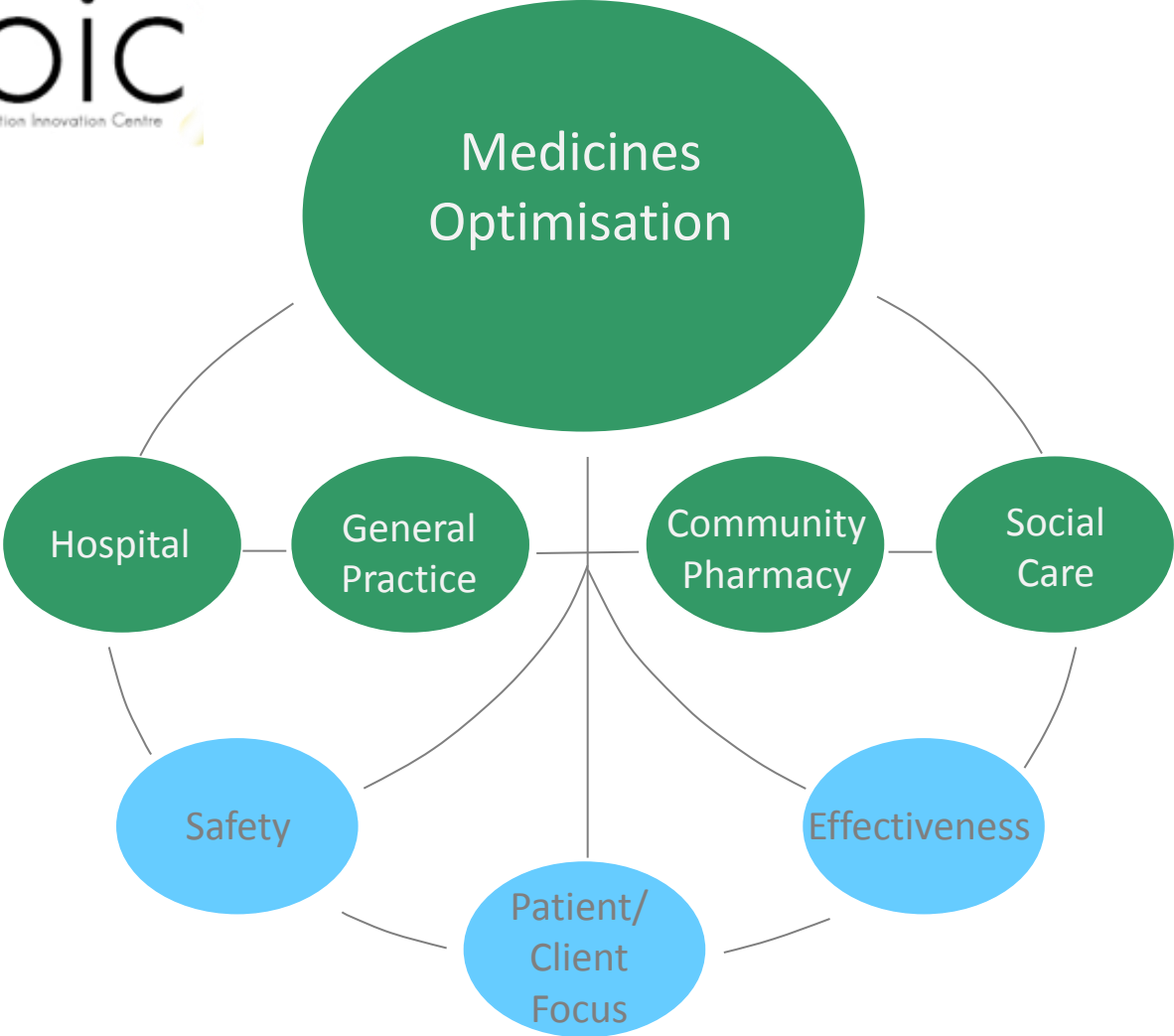


Technological advances



Integration?

Medicines optimisation



Case studies

Case A



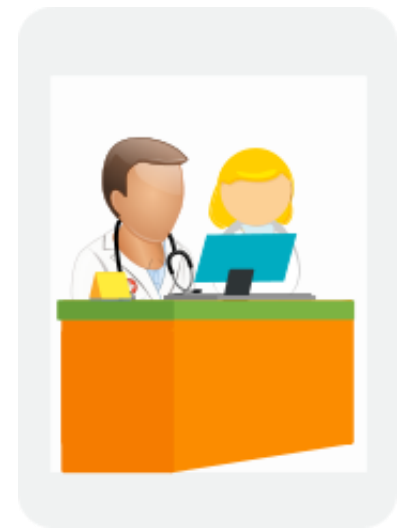
Case B



Case C



Case D



Future



"Innovation— any new idea—by definition will not be accepted at first. It takes repeated attempts, endless demonstrations, monotonous rehearsals before innovation can be accepted and internalized by an organization. This requires *courageous patience*."

Warren Gamaliel Bennis (1925 – 2014)